



Brussels, 5 October 2016

List of demarcated areas established in the Union territory for the presence of *Xylella fastidiosa* as referred to in Article 4(1) of Decision (EU) 2015/789

- Update 7 -

Pursuant to Article 4(4) of Commission Implementing Decision (EU) 2015/789, the following demarcated areas are established by the Member States concerned for the presence of *Xylella fastidiosa* as referred to in Article 4(1) of that Decision.

The demarcated area consists of the infected zone and a 10 km buffer zone as specified in Article 4(2) of that Decision.

Demarcated areas subject to eradication measures pursuant to Article 6 of Decision (EU) 2015/789

- The municipalities listed in Section I and Section II, located in some parts of **France** (Corsica and Provence-Alpes-Côte d'Azur), and partially or entirely affected by a demarcated area established for the presence of *Xylella fastidiosa* subsp. *multiplex*;
- The municipalities listed in Section III and Section IV, located in **Germany** (Saxony and Thuringia), and partially or entirely affected by the demarcated area established for the presence of *Xylella fastidiosa* subsp. *fastidiosa*;

Demarcated area subject to containment measures pursuant to Article 7 of Decision (EU) 2015/789

- The municipalities listed in Section V and Section VI, located in **Italy** (Apulia), and partially or entirely affected by the demarcated area established for the presence of *Xylella fastidiosa* subsp. *pauca*.

I. list of municipalities affected partially or entirely by the demarcated areas established in the french territory for the presence of *xylella fastidiosa* subsp. *multiplex*

CORSICA

AFA
AGHIONE
AJACCIO
ALATA
ALBITRECCIA
ALERIA
ALGAJOLA
ALTAGENE
AMBIGNA
ANTISANTI
APPIETTO
ARBELLARA
ARBORI
AREGNO
ARGIUSTA-MORICCIO
ARRO
AULLENE
AVAPESSA
AZILONE-AMPAZA
AZZANA
BALOGNA
BARBAGGIO
BASTELICA
BASTELICACCIA
BASTIA
BELGODERE
BELVEDERE-CAMPOMORO
BIGUGLIA
BILIA
BOCOGNANO
BONIFACIO
BORGO
CALCATOGGIO
CALENZANA
CALVI
CAMPO
CANNELLE
CARBINI
CARBUCCIA
CARDO-TORGIA
CARGESE
CARGIACA
CASAGLIONE
CASALABRIVA
CATERI
CAURO
COGGIA
COGNOCOLI-MONTICCHI
CONCA

CORBARA
COSTA
COTI-CHIAVARI
CRISTINACCE
CUTTOLI-CORTICCHIATO
ECCICA-SUARELLA
EVISA
FARINOLE
FELICETO
FIGARI
FOCE
FORCIOLO
FOZZANO
FRASSETO
FURIANI
GALERIA
GHISONACCIA
GIUNCAGGIO
GIUNCHETO
GRANACE
GROSSA
GROSSETO-PRUGNA
GUAGNO
GUARGUALE
LAVATOGGIO
LECCI
LETIA
LEVIE
LOPIGNA
LORETO-DI-TALLANO
LUCCIANA
LUGO-DI-NAZZA
LUMIO
L'ILE ROUSSE
MANSO
MARIGNANA
MELA
MOCA-CROCE
MONACIA-D'AULLENE
MONCALE
MONTEGROSSO
MONTICELLO
MURATO
MURO
MURZO
NESSA
OCANA
OCCHIATANA
OLETTA
OLIVESE
OLMETA-DI-TUDA
OLMETO
OLMI CAPPELLA
OLMICCIA
OSANI

OTA
PALASCA
PARTINELLO
PASTRICCIOLA
PATRIMONIO
PERI
PETRETO-BICCHISANO
PIANA
PIANOTTOLI-CALDARELLO
PIETROSELLA
PIETROSO
PIEVE
PIGNA
PILA-CANALE
PIOGGIOLO
POGGIO-DI-NAZZA
POGGIO-D'OLETTA
POGGIOLO
PORTO-VECCHIO
PROPRIANO
PRUNELLI-DI-FIUMORBO
QUASQUARA
QUENZA
RAPALE
RENNO
REZZA
ROSAZIA
RUTALI
SAINTE-LUCIE-DE-TALLANO
SAINT-FLORENT
SALICE
SAN-GAVINO-DI-CARBINI
SAN-MARTINO-DI-LOTA
SANTA-MARIA-FIGANIELLA
SANTA-MARIA-SICHE
SANT'ANDREA-D'ORCINO
SANT'ANTONINO
SANTA-REPARATA-DI-BALAGNA
SARI-D'ORCINO
SARI-SOLENZARA
SARROLA-CARCOPINO
SARTENE
SCOLCA
SERRA-DI-FERRO
SERRA-DI-FIUMORBO
SERRA-DI-SCOPAMENE
SERRIERA
SOLLACARO
SORBOLLANO
SOTTA
SPELONCATO
TALLONE
TAVACO
TAVERA
TOLLA

UCCIANI
URBALACONE
VALLECALLE
VALLE-DI-MEZZANA
VERO
VEZZANI
VICO
VIGGIANELLO
VIGNALE
VILLANOVA
VILLE DI PARASO
VILLE-DI-PIETRABUGNO
ZERUBIA
ZIGLIARA
ZILIA
ZONZA
ZOZA

PROVENCE ALPES COTE D'AZUR (PACA)

ANTIBES
ASPREMONT
AURIBEAU-SUR-SIAGNE
BANDOL
BEAUSOLEIL
BEZAUDUN-LES-ALPES
BIOT
BLAUSASC
CAGNES-SUR-MER
CANNES
CANTARON
CAP-D'AIL
CARROS
CASTAGNIERS
CASTELLAR
CASTILLON
CHATEAUNEUF-GRASSE
COLOMARS
EZE
EVENOS
FALICON
FAUCON
FREJUS
GATTIERES
GORBIO
GRASSE
LA COLLE-SUR-LOUP
LA GAUDE
LA GARDE
LA ROQUETTE-SUR-SIAGNE
LA SEYNE-SUR-MER
LA TRINITE
LA TURBIE
LA VALETTE-DU-VAR
LE BAR-SUR-LOUP

LE BEAUSSET
LE BROC
LE CANNET
LE CASTELLET
LE PRADET
LE REVEST-LES-EAUX
LE ROURET
LE TIGNET
LES ADRETS-DE-L'ESTEREL
MANDELIEU-LA-NAPOULE
MENTON
MOUANS-SARTOUX
MOUGINS
NICE
OLLIOULES
OPIO
PEGOMAS
PEILLE
PEILLON
PEYMEINADE
ROQUEBRUNE-CAP-MARTIN
ROQUEFORT-LES-PINS
SAINT-ANDRE-DE-LA-ROCHE
SAINT-BLAISE
SAINTE-AGNES
SAINT-JEANNET
SAINT-LAURENT-DU-VAR
SAINT-MANDRIER-SUR-MER
SAINT-MARTIN-DU-VAR
SAINT-PAUL
SAINT PAUL DE VENCE
SAINT-RAPHAEL
SANARY-SUR-MER
SIX-FOURS-LES-PLAGES
SOSPEL
TANNERON
THEOULE-SUR-MER
TOULON
TOURRETTE-LEVENS
TOURRETTES-SUR-LOUP
VALBONNE
VALLAURIS
VENCE
VILLEFRANCHE-SUR-MER
VILLENEUVE-LOUBET

**EU OR NON-EU MEMBER STATES AFFECTED BY THE BUFFER ZONES
ESTABLISHED IN THE FRENCH TERRITORY**

ITALY (LIGURIA)

OLIVETTA SAN MICHELE
VENTIMIGLIA

PRINCIPALITY OF MONACO

MONACO

II. List of municipalities affected partially or entirely by the infected zones established in the French territory for the presence of *Xylella fastidiosa* subsp. *multiplex*

CORSICA

AFA
AJACCIO
ALATA
ALBITRECCIA
AMBIGNA
APPIETTO
ARRO
BASTELICACCIA
BELVEDERE-COMPOMORO
BIGUGLIA
BONIFACIO
CALCATOGGIO
CALVI
CARGESE
CASAGLIONE
CASALABRIVA
CAURO
COTI-CHIAVARI
COGGIA
CONCA
CUTTOLI-CORTICCHIATO
ECCICA SUARELLA
FIGARI
FOZZANO
FURIANI
GHISONACCIA
GROSSA
GROSSETO-PRUGNA
LECCI
LORETO-DI-TALLANO
LUMIO
MONACIA-D'AULLENE
OLMETO
OLMICCIA
OTA
PERI
PIANOTTOLI-CALDARELLO
PIETROSELLA
PILA-CANALE
PORTO-VECCHIO
PROPRIANO
SAINTE-LUCIE-DE-TALLANO
SANT'ANDREA D'ORCINO
SANTA-MARIA-FIGANELLA
SANTA REPARATA DI BALAGNA
SAN GAVINO DI CARBINI
SARROLA-CARCOPINO
SARTENE

SERRA-DI-FERRO
SOLLACARO
VERO
VICO
VIGGIANELLO
VILLANOVA
ZONZA

PROVENCE ALPES COTE D'AZUR (PACA)

ANTIBES
BIOT
LA SEYNE SUR MER
MANDELIEU-LA-NAPOULE
MENTON
NICE
SAINT-LAURENT-DU-VAR
VILLENEUVE LOUBET

III. List of municipalities affected partially or entirely by the demarcated area established in the German territory for the presence of *Xylella fastidiosa* subsp. *fastidiosa*

SAXONY:

PAUSA-MÜHLENTROFF
ROSENBACH
PLAUEN
REUTH
WEISCHLITZ
ELSTERBERG
PÖHL

THURINGIA:

ARNSGRÜN
BERNSGRÜN
BÜNA
COSSENGRÜN
DOBIA
DRÖSWEIN
ERBENGRÜN
EUBENBERG
FÖRTHEN
FROTSCHAU
GABLAU-LEININGEN
GÖSCHITZ
GÖTTENDORF
HOHNDORF
KIRSCHKAU
KLEINWOLSCHENDORF
LANGENBUCH
LANGENWOLSCHENDORF
LÄWITZ
LEITLITZ
LÖHMA
LÖSSAU
NIEDERBÖHMERSDORF
PAHREN
PANSDORF
PÖLLWITZ
SCHLEIZ
SCHÖNBACH
SCHÖNBRUNN
STELZENDORF
UNTERKOSKAU
WECKERSDORF
WELLSDORF
WOLFSHAIN

ZEULENRODA

- IV. List of municipalities affected partially or entirely by the infected zone established in the German territory for the presence of *Xylella fastidiosa* subsp. *fastidiosa***

SAXONY

PAUSA-MÜHLTROFF

V. List of municipalities affected partially or entirely by the demarcated area established in the Italian territory for the presence of *Xylella fastidiosa* subsp. *pauca*

APULIA

AVETRANA
BRINDISI
CAROVIGNO
CAROSINO
CEGLIE MESSAPICA
CELLINO SAN MARCO
CISTERNINO
CRISPIANO
ERCHIE
ENTIRE PROVINCE OF LECCE (ALL MUNICIPALITIES)
FAGGIANO
FASANO
FRAGAGNANO
FRANCAVILLA FONTANA
GROTTAGLIE
LATIANO
LEPORANO
LIZZANO
MANDURIA
MARTINA FRANCA
MARUGGIO
MESAGNE
MONTEIASI
MONTEMESOLA
MONTEPARANO
ORIA
OSTUNI
PULSANO
ROCCAFORZATA
SAN DONACI
SAN GIORGIO IONICO
SAN MARZANO DI SAN GIUSEPPE
SAN MICHELE SALENTINO
SAN PANCRAZIO SALENTINO
SAN PIETRO VERNOTICO
SAN VITO DEI NORMANNI
SAVA
STATTE
TARANTO
TORCHIAROLO
TORRE SANTA SUSANNA
TORRICELLA
VILLA CASTELLI

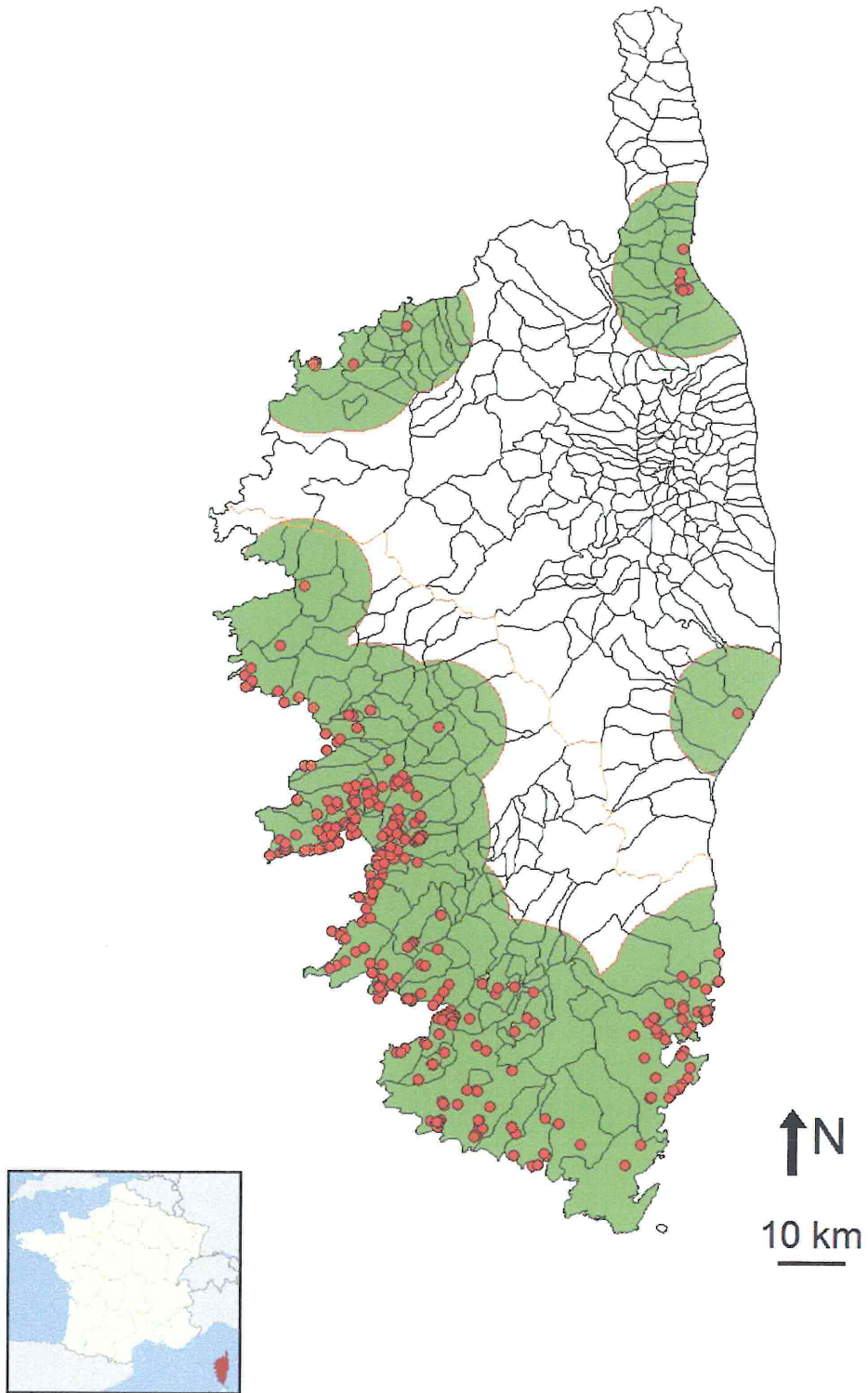
VI. List of municipalities affected partially or entirely by the infected zone established in the Italian territory for the presence of *Xylella fastidiosa* subsp. *pauca*

APULIA

AVETRANA
BRINDISI
CAROSINO
CAROVIGNO
CEGLIE MESSAPICA
CELLINO SAN MARCO
ERCHIE
ENTIRE PROVINCE OF LECCE (ALL MUNICIPALITIES)
FAGGIANO
FRAGAGNANO
FRANCAVILLA FONTANA
GROTTAGLIE
LATIANO
LEPORANO
LIZZANO
MANDURIA
MARTINA FRANCA
MARUGGIO
MESAGNE
MONTEIASI
MONTEPARANO
ORIA
OSTUNI
PULSANO
ROCCAFORZATA
SAN GIORGIO IONICO
SAN DONACI
SAN MARZANO DI SAN GIUSEPPE
SAN MICHELE SALENTINO
SAN PANCRAZIO SALENTINO
SAN PIETRO VERNOTICO
SAN VITO DEI NORMANNI
SAVA
TARANTO
TORRICELLA
TORCHIAROLO
TORRE SANTA SUSANNA
VILLA CASTELLI

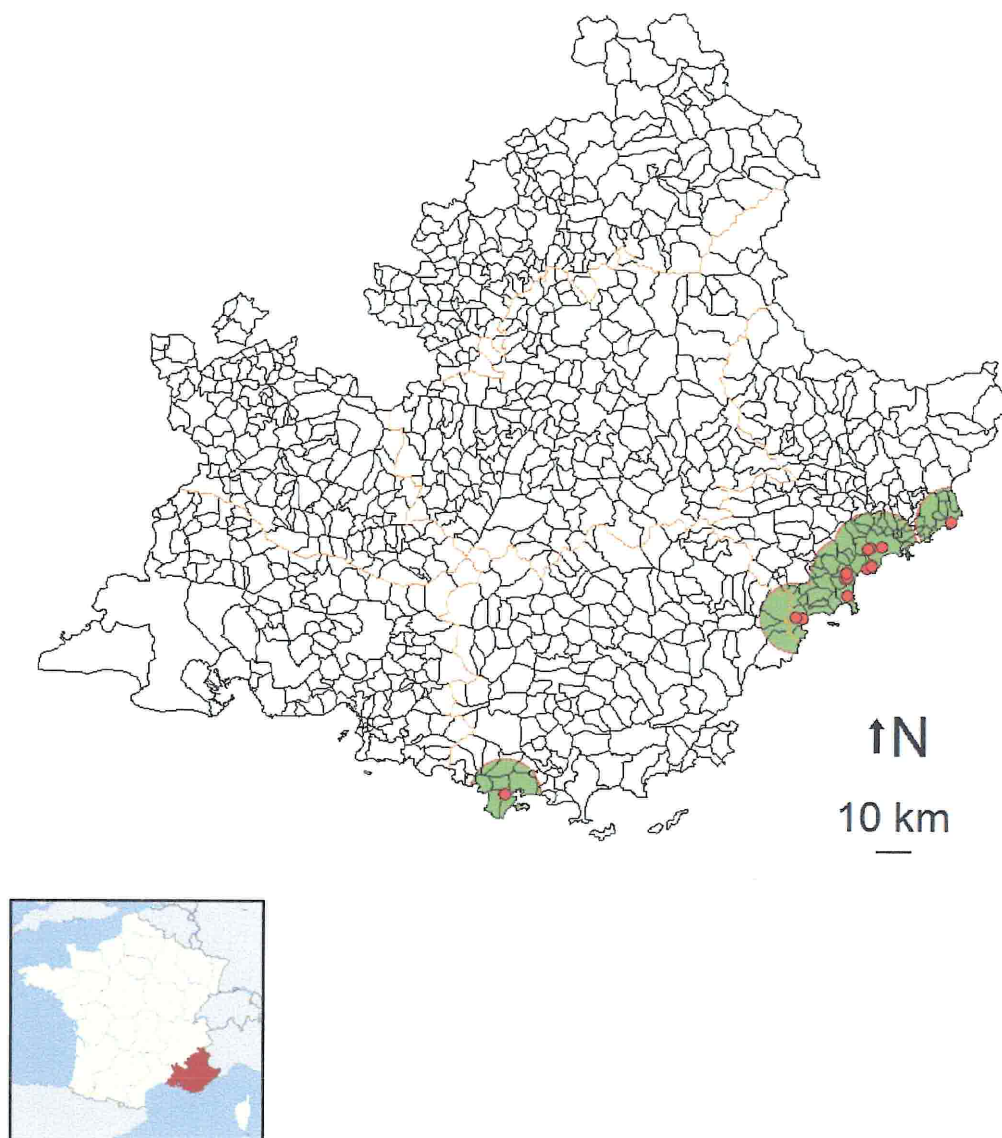
1. Map of 'Demarcated Areas' located in Corsica (France)

(Latest update notified to European Commission dated 25/08/2016)

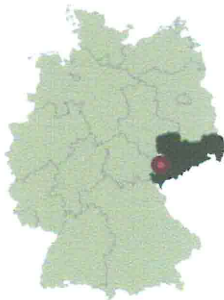
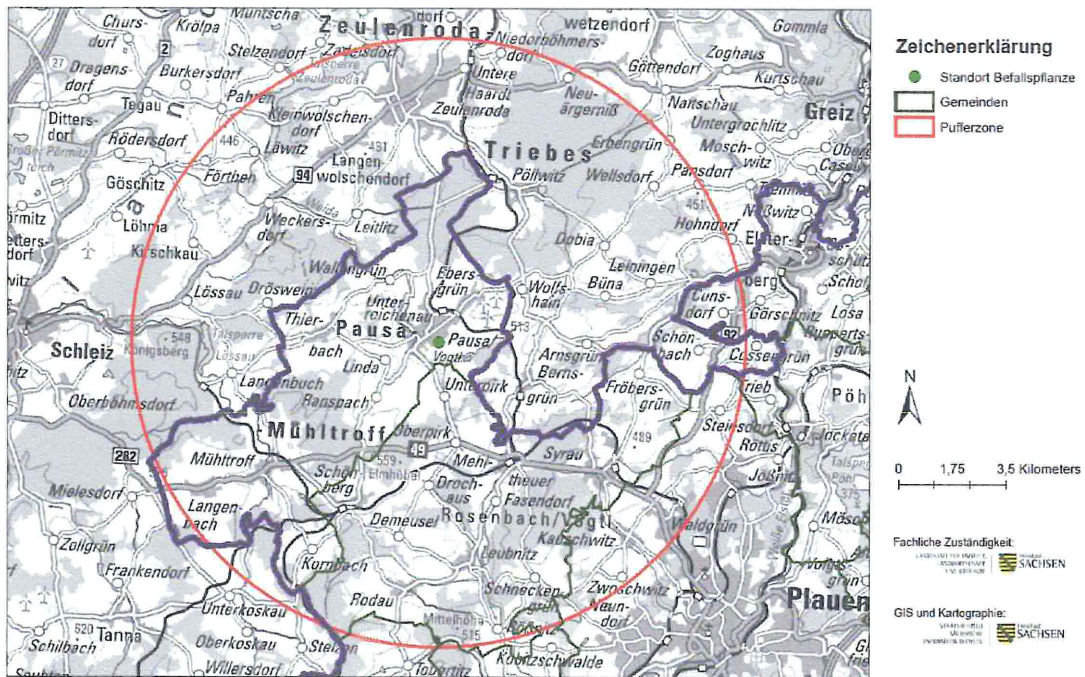


2. Map of 'Demarcated Areas' located in Provence-Alpes-Côte d'Azur (France)

(Latest update notified to European Commission dated 25/08/2016)



3. Map of the 'Demarcated Area' located between Saxony and Thuringia (Germany)
 (Latest update notified to European Commission dated 4/10/2016)



4. Map of the 'Demarcated Area' located in Apulia (Italy)
 (Latest update notified to European Commission dated 1/06/2016)

