



Brussels, 19 February 2016

List of demarcated areas established in the Union territory for the presence of *Xylella fastidiosa* as referred to in Article 4(1) of Decision (EU) 2015/789

Pursuant to Article 4(4) of Commission Implementing Decision (EU) 2015/789, the following demarcated areas are established by the Member States concerned for the presence of *Xylella fastidiosa* as referred to in Article 4(1) of that Decision.

The demarcated area consists of the infected zone and a 10 km buffer zone as specified in Article 4(2) of that Decision.

Demarcated areas subject to eradication measures pursuant to Article 6 of Decision (EU) 2015/789

- The municipalities listed in Section I and Section II, located in some parts of France (**Corsica** and **Provence-Alpes-Côte d'Azur**), and partially or entirely affected by a demarcated area established for the presence of *Xylella fastidiosa* subsp. *multiplex*;
- The municipalities listed in Section III and Section IV, located in some parts of Italy (**Apulia**), and partially or entirely affected by a demarcated area established for the presence of *Xylella fastidiosa* subsp. *pauca*;

Infected zone subject to containment measures pursuant to Article 7 of Decision (EU) 2015/789

- The entire **province of Lecce** (Apulia, Italy) is declared infected zone for the presence of *Xylella fastidiosa* subsp. *pauca*;

I. List of municipalities affected partially or entirely by the demarcated areas established in the French territory for the presence of *Xylella fastidiosa* subsp. *multiplex*;

CORSICA

AFA
AGHIONE
AJACCIO
ALATA
ALBITRECCIA
ALERIA
ALGAJOLA
ALTAGENE
AMBIEGNA
ANTISANTI
APPIETTO
ARBELLARA
ARBORI
AREGNO
ARGIUSTA-MORICCIO
ARRO
AULLENE
AVAPESSA
AZILONE-AMPAZA
AZZANA
BALOGNA
BARBAGGIO
BASTELICA
BASTELICACCIA
BASTIA
BELVEDERE-CAMPOMORO
BIGUGLIA
BILIA
BOCOGNANO
BONIFACIO
BORGO
CALCATOGGIO
CALENZANA
CALVI
CAMPO
CANNELLE
CARBINI
CARBUCCIA
CARDO-TORGIA
CARGESE
CARGIACA
CASAGLIONE
CASALABRIVA
CATERI
CAURO
COGGIA
COGNOCOLI-MONTICCHI
CONCA
CORBARA

COTI-CHIAVARI
CRISTINACCE
CUTTOLI-CORTICCHIATO
ECCICA-SUARELLA
EVISA
FARINOLE
FELICETO
FIGARI
FOCE
FORCIOLO
FOZZANO
FURIANI
GALERIA
GHISONACCIA
GIUNCAGGIO
GIUNCHETO
GRANACE
GROSSA
GROSSETO-PRUGNA
GUAGNO
GUARGUALE
LAVATOGGIO
LECCI
LEVIE
LOPIGNA
LORETO-DI-TALLANO
LUCCIANA
LUGO-DI-NAZZA
LUMIO
MANSO
MARIGNANA
MELA
MOCA-CROCE
MONACIA-D'AULLENE
MONCALE
MONTEGROSSO
MURATO
MURO
MURZO
NESSA
OCANA
OLETTA
OLIVESE
OLMETA-DI-TUDA
OLMETO
OLMICCIA
OSANI
OTA
PARTINELLO
PASTRICCIOLA
PATRIMONIO
PERI
PETRETO-BICCHISANO
PIANA
PIANOTTOLI-CALDARELLO

PIETROSELLA
PIETROSO
PIEVE
PIGNA
PILA-CANALE
POGGIO-DI-NAZZA
POGGIO-D'OLETTA
POGGIOLO
PORTO-VECCHIO
PROPRIANO
PRUNELLI-DI-FIUMORBO
QUASQUARA
QUENZA
RAPALE
RENNO
REZZA
ROSAZIA
RUTALI
SAINTE-LUCIE-DE-TALLANO
SAINT-FLORENT
SALICE
SAN-GAVINO-DI-CARBINI
SAN-MARTINO-DI-LOTA
SANTA-MARIA-FIGANIELLA
SANTA-MARIA-SICHE
SANT'ANDREA-D'ORCINO
SANT'ANTONINO
SANTA-REPARATA-DI-BALAGNA
SARI-D'ORCINO
SARI-SOLENZARA
SARROLA-CARCOPINO
SARTENE
SCOLCA
SERRA-DI-FERRO
SERRA-DI-FIUMORBO
SERRA-DI-SCOPAMENE
SERRIERA
SOLLACARO
SORBOLLANO
SOTTA
TALLONE
TAVACO
TAVERA
TOLLA
UCCIANI
URBALACONE
VALLECALLE
VALLE-DI-MEZZANA
VERO
VEZZANI
VICO
VIGGIANELLO
VIGNALE
VILLANOVA
VILLE-DI-PIETRABUGNO

ZERUBIA
ZIGLIARA
ZILIA
ZONZA
ZOZA

PROVENCE ALPES COTE D'AZUR (PACA)

ANTIBES,
ASPREMONT
AURIBEAU-SUR-SIAGNE
BEAUSOLEIL
BEZAUDUN-LES-ALPES
BIOT
BLAUSASC
CAGNES-SUR-MER
CANNES
CANTARON
CAP-D'AIL
CARROS
CASTAGNIERS
CASTELLAR
CASTILLON
CHATEAUNEUF-GRASSE
COLOMARS
EZE
FAUCON
GATTIERES
GORBIO
GRASSE
LA COLLE-SUR-LOUP
LA GAUDE
LA ROQUETTE-SUR-SIAGNE
LA TRINITE
LA TURBIE
LE BAR-SUR-LOUP
LE BROCC
LE CANNET
LE ROURET
LE TIGNET
MANDELIEU-LA-NAPOULE
MENTON
MOUANS-SARTOUX
MOUGINS
NICE
OPIO
PEGOMAS
PEILLE
PEILLON
PEYMEINADE
ROQUEBRUNE-CAP-MARTIN
ROQUEFORT-LES-PINS
SAINT-ANDRE-DE-LA-ROCHE
SAINT-BLAISE
SAINTE-AGNES

SAINT-JEANNET
SAINT-LAURENT-DU-VAR
SAINT-MARTIN-DU-VAR
SAINT-PAUL
SOSPEL
THEOULE-SUR-MER
TOURRETTE-LEVENS
TOURRETTES-SUR-LOUP
VALBONNE
VALLAURIS
VENCE
VILLEFRANCHE-SUR-MER
VILLENEUVE-LOUBET

BANDOL
EVENOS
FREJUS
LA GARDE
LA SEYNE-SUR-MER
LA VALETTE-DU-VAR
LE BEAUSSET
LE CASTELLET
LE PRADET
LE REVEST-LES-EAUX
LES ADRETS-DE-L'ESTEREL
OLLIOULES
SAINT-MANDRIER-SUR-MER
SAINT-RAPHAEL
SANARY-SUR-MER
SIX-FOURS-LES-PLAGES
TANNERON
TOULON

**EU MEMBER STATES AFFECTED BY THE BUFFER ZONES ESTABLISHED IN THE
FRENCH TERRITORY**

ITALY (LIGURIA)

OLIVETTA SAN MICHELE
VENTIMIGLIA

**THIRD COUNTRIES AFFECTED BY THE BUFFER ZONES ESTABLISHED IN THE
FRENCH TERRITORY**

PRINCIPALITY OF MONACO

MONACO

II. List of municipalities affected partially or entirely by the infected zones established in the French territory for the presence of *Xylella fastidiosa* subsp. *multiplex*;

CORSICA

AFA
AJACCIO
ALATA
ALBITRCCIA
APPIETTO
BASTELICACCIA
BELVEDERE-COMPOMORO
BIGUGLIA
BONIFACIO
CALCATOGGIO
CALVI
CARGESE
CASAGLIONE
CAURO
COTI-CHIAVARI
CUTTOLI-CORTICCHIATO
ECCICA SUARELLA
FIGARI
FOZZANO
FURIANI
GHISONACCIA
GROSSA
GROSSETO-PRUGNA
LECCI
LUMIO
OLMETO
OTA
PERI
PIANOTTOLI-CALDARELLO
PIETROSELLA
PILA-CANALE
PORTO-VECCHIO
PROPRIANO
SAINTE-LUCIE-DE-TALLANO
SANTA-MARIA-FIGANELLA
SARROLA-CARCOPINO
SARTENE
SERRA-DI-FERRO
SOLLACARO
VERO
VICO
VIGGIANELLO
VILLANOVA
ZONZA

PROVENCE ALPES COTE D'AZUR (PACA)

BIOT

LA SEYNE SUR MER
MANDELIEU-LA-NAPOULE
MENTON
NICE
SAINT-LAURENT-DU-VAR

III. List of municipalities affected partially or entirely by the demarcated area established in the Italian territory for the presence of *Xylella fastidiosa* subsp. *pauca*;

APULIA

AVETRANA
BRINDISI
CELLINO SAN MARCO
ERCHIE
FRANCAVILLA FONTANA
LATIANO
LECCE PROVINCE (entire province under containment)
ORIA
MANDURIA
MESAGNE
SAN DONACI
SAN PANCRAZIO SALENTINO
SAN MICHELE SALENTINO
TARANTO
TORCHIAROLO
TORRE SANTA SUSANNA
SAN MARZANO DI SAN GIUSEPPE
SAN PIETRO VERNOTICO
SAVA

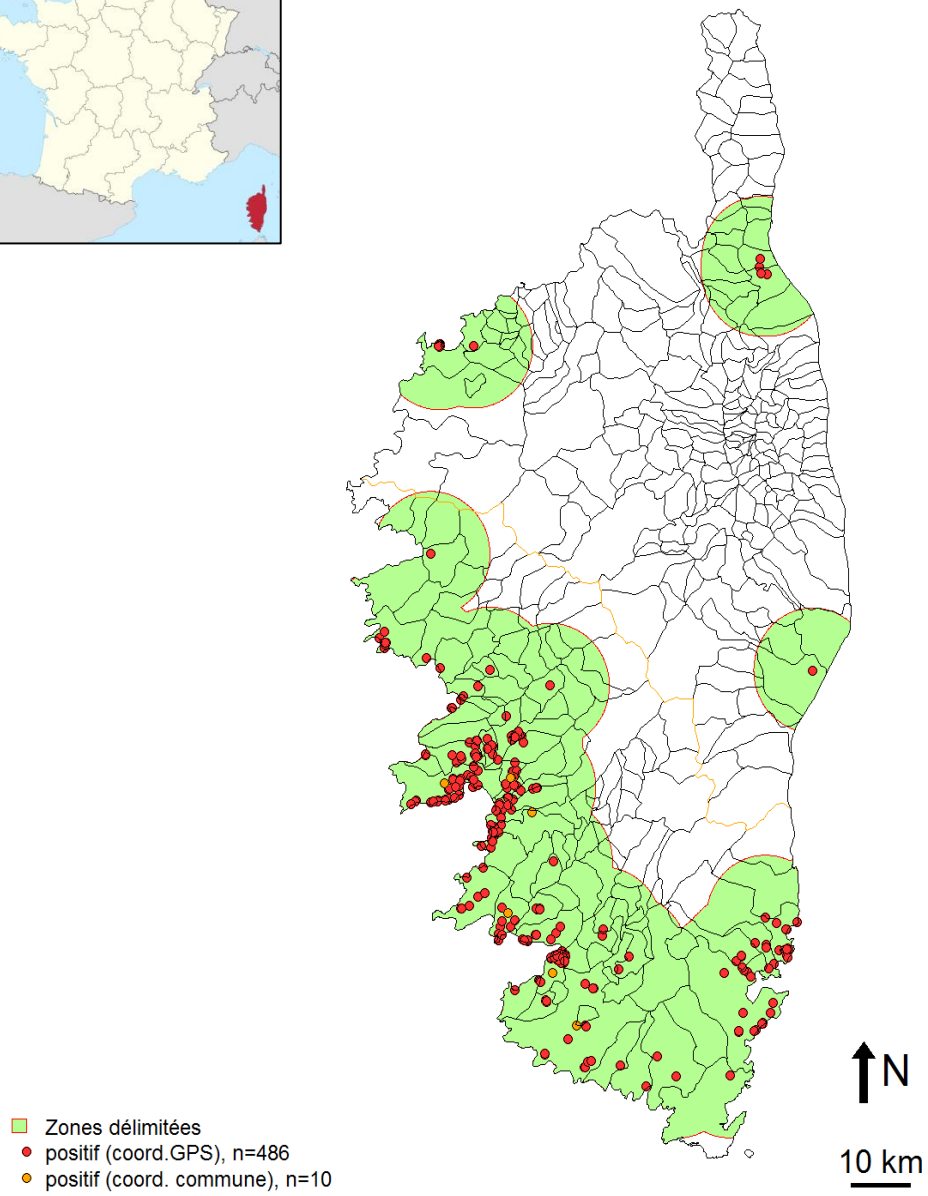
IV. List of municipalities affected partially or entirely by the infected zones established in the Italian territory for the presence of *Xylella fastidiosa* subsp. *pauca*;

APULIA

AVETRANA
BRINDISI
CELLINO SAN MARCO
FRANCAVILLA FONTANA
LECCE PROVINCE (entire province under containment)
ORIA
SAN DONACI
SAN PANCRAZIO SALENTINO
SAN PIETRO VERNOTICO
TARANTO
TORCHIAROLO

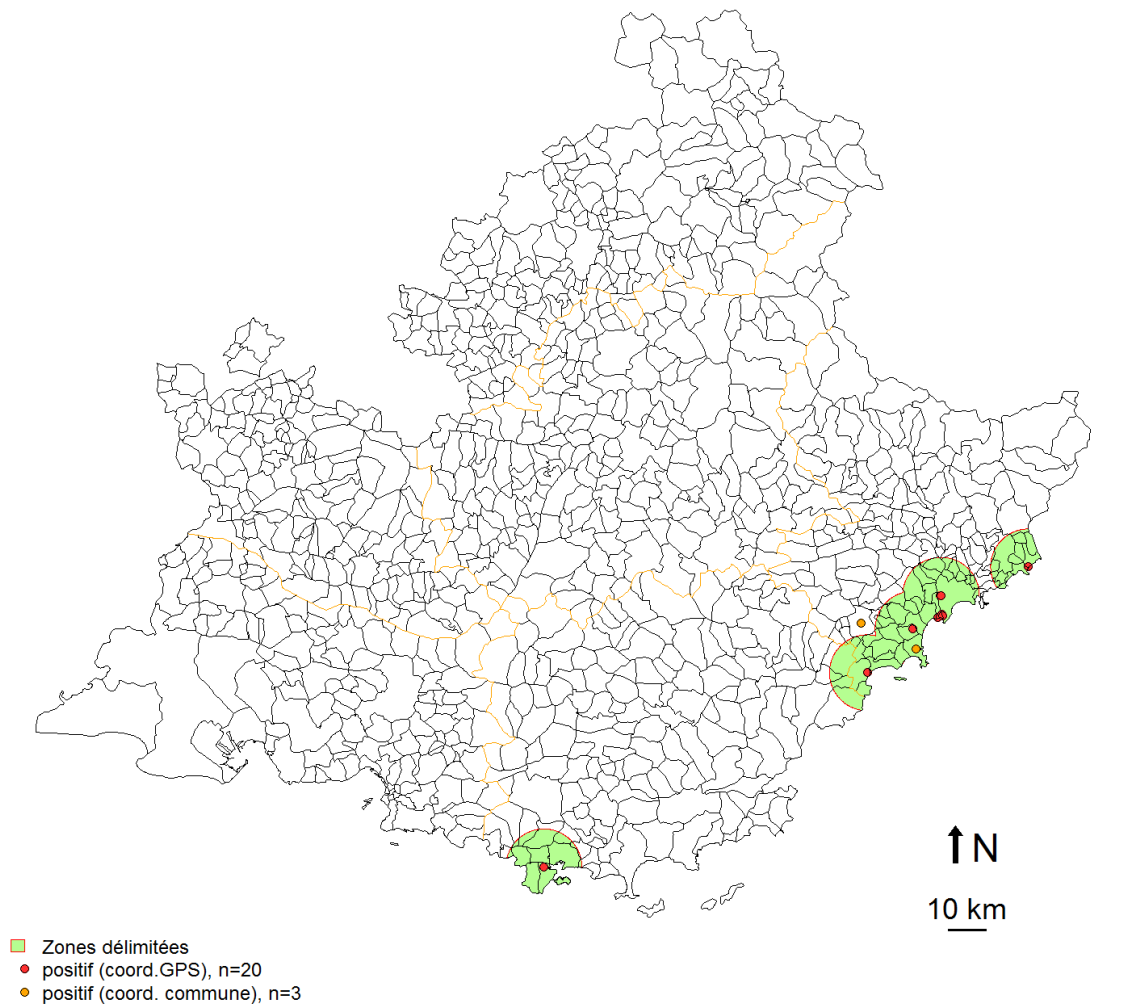
1. Map of 'Demarcated Areas' located in Corsica (France)

(Latest update dated 04/01/2016)



2. Map of 'Demarcated Areas' located in Provence-Alpes-Côte d'Azur (France)

(Latest update dated 04/01/2016)



3. Map of the 'Demarcated Area' located in Apulia (Italy)

(Latest update dated 19/02/2016)

