



Brussels, 23 June 2016

**List of demarcated areas established in the Union territory for the presence of
Xylella fastidiosa as referred to in Article 4(1) of Decision (EU) 2015/789**

Pursuant to Article 4(4) of Commission Implementing Decision (EU) 2015/789, the following demarcated areas are established by the Member States concerned for the presence of *Xylella fastidiosa* as referred to in Article 4(1) of that Decision.

The demarcated area consists of the infected zone and a 10 km buffer zone as specified in Article 4(2) of that Decision.

Demarcated areas subject to eradication measures pursuant to Article 6 of Decision (EU) 2015/789

- The municipalities listed in Section I and Section II, located in some parts of France (**Corsica** and **Provence-Alpes-Côte d'Azur**), and partially or entirely affected by a demarcated area established for the presence of *Xylella fastidiosa* subsp. *multiplex*;

Infected zone subject to containment measures pursuant to Article 7 of Decision (EU) 2015/789

- The entire **province of Lecce**, **municipalities located in the provinces of Taranto and Brindisi** listed in Section III and Section IV, and partially or entirely affected by the demarcated area established for the presence of *Xylella fastidiosa* subsp. *pauca*;

I. List of municipalities affected partially or entirely by the demarcated areas established in the French territory for the presence of *Xylella fastidiosa* subsp. *multiplex*;

CORSICA

AFA
AGHIONE
AJACCIO
ALATA
ALBITRECCIA
ALERIA
ALGAJOLA
ALTAGENE
AMBIEGNA
ANTISANTI
APPIETTO
ARBELLARA
ARBORI
AREGNO
ARGIUSTA-MORICCIO
ARRO
AULLENE
AVAPESSA
AZILONE-AMPAZA
AZZANA
BALOGNA
BARBAGGIO
BASTELICA
BASTELICACCIA
BASTIA
BELGODERE
BELVEDERE-CAMPOMORO
BIGUGLIA
BILIA
BOCOGNANO
BONIFACIO
BORGO
CALCATOGGIO
CALENZANA
CALVI
CAMPO
CANNELLE
CARBINI
CARBUCCIA
CARDO-TORGIA
CARGESE
CARGIACA
CASAGLIONE
CASALABRIVA
CATERI
CAURO
COGGIA
COGNOCOLI-MONTICCHI
CONCA

CORBARA
COSTA
COTI-CHIAVARI
CRISTINACCE
CUTTOLI-CORTICCHIATO
ECCICA-SUARELLA
EVISA
FARINOLE
FELICETO
FIGARI
FOCE
FORCIOLO
FOZZANO
FRASSETO
FURIANI
GALERIA
GHISONACCIA
GIUNCAGGIO
GIUNCHETO
GRANACE
GROSSA
GROSSETO-PRUGNA
GUAGNO
GUARGUALE
LAVATOGGIO
LECCI
LETIA
LEVIE
LOPIGNA
LORETO-DI-TALLANO
LUCCIANA
LUGO-DI-NAZZA
LUMIO
L'ILE ROUSSE
MANSO
MARIGNANA
MELA
MOCA-CROCE
MONACIA-D'AULLENE
MONCALE
MONTEGROSSO
MONTICELLO
MURATO
MURO
MURZO
NESSA
OCANA
OCCHIATANA
OLETTA
OLIVESE
OLMETA-DI-TUDA
OLMETO
OLMI CAPPELLA
OLMICCIA
OSANI

OTA
PALASCA
PARTINELLO
PASTRICCIOLA
PATRIMONIO
PERI
PETRETO-BICCHISANO
PIANA
PIANOTTOLI-CALDARELLO
PIETROSELLA
PIETROSO
PIEVE
PIGNA
PILA-CANALE
PIOGGIOLO
POGGIO-DI-NAZZA
POGGIO-D'OLETTA
POGGIOLO
PORTO-VECCHIO
PROPRIANO
PRUNELLI-DI-FIUMORBO
QUASQUARA
QUENZA
RAPALE
RENNO
REZZA
ROSAZIA
RUTALI
SAINTE-LUCIE-DE-TALLANO
SAINT-FLORENT
SALICE
SAN-GAVINO-DI-CARBINI
SAN-MARTINO-DI-LOTA
SANTA-MARIA-FIGANIELLA
SANTA-MARIA-SICHE
SANT'ANDREA-D'ORCINO
SANT'ANTONINO
SANTA-REPARATA-DI-BALAGNA
SARI-D'ORCINO
SARI-SOLENZARA
SARROLA-CARCOPINO
SARTENE
SCOLCA
SERRA-DI-FERRO
SERRA-DI-FIUMORBO
SERRA-DI-SCOPAMENE
SERRIERA
SOLLACARO
SORBOLLANO
SOTTA
SPELONCATO
TALLONE
TAVACO
TAVERA
TOLLA

UCCIANI
URBALACONE
VALLECALLE
VALLE-DI-MEZZANA
VERO
VEZZANI
VICO
VIGGIANELLO
VIGNALE
VILLANOVA
VILLE DI PARASO
VILLE-DI-PIETRABUGNO
ZERUBIA
ZIGLIARA
ZILIA
ZONZA
ZOZA

PROVENCE ALPES COTE D'AZUR (PACA)

ANTIBES,
ASPREMONT
AURIBEAU-SUR-SIAGNE
BEAUSOLEIL
BEZAUDUN-LES-ALPES
BIOT
BLAUSASC
CAGNES-SUR-MER
CANNES
CANTARON
CAP-D'AIL
CARROS
CASTAGNIERS
CASTELLAR
CASTILLON
CHATEAUNEUF-GRASSE
COLOMARS
EZE
FALICON
FAUCON
GATTIERES
GORBIO
GRASSE
LA COLLE-SUR-LOUP
LA GAUDE
LA ROQUETTE-SUR-SIAGNE
LA TRINITE
LA TURBIE
LE BAR-SUR-LOUP
LE BROC
LE CANNET
LE ROURET
LE TIGNET
MANDELIEU-LA-NAPOULE
MENTON

MOUANS-SARTOUX
MOUGINS
NICE
OPIO
PEGOMAS
PEILLE
PEILLON
PEYMEINADE
ROQUEBRUNE-CAP-MARTIN
ROQUEFORT-LES-PINS
SAINT-ANDRE-DE-LA-ROCHE
SAINT-BLAISE
SAINTE-AGNES
SAINT-JEANNET
SAINT-LAURENT-DU-VAR
SAINT-MARTIN-DU-VAR
SAINT-PAUL
SAINT PAUL DE VENCE
SOSPEL
THEOULE-SUR-MER
TOURRETTE-LEVENS
TOURRETTES-SUR-LOUP
VALBONNE
VALLAURIS
VENCE
VILLEFRANCHE-SUR-MER
VILLENEUVE-LOUBET

BANDOL
EVENOS
FREJUS
LA GARDE
LA SEYNE-SUR-MER
LA VALETTE-DU-VAR
LE BEAUSSET
LE CASTELLET
LE PRADET
LE REVEST-LES-EAUX
LES ADRETS-DE-L'ESTEREL
OLLIOULES
SAINT-MANDRIER-SUR-MER
SAINT-RAPHAEL
SANARY-SUR-MER
SIX-FOURS-LES-PLAGES
TANNERON
TOULON

**EU MEMBER STATES AFFECTED BY THE BUFFER ZONES ESTABLISHED IN THE
FRENCH TERRITORY**

ITALY (LIGURIA)

OLIVETTA SAN MICHELE
VENTIMIGLIA

**THIRD COUNTRIES AFFECTED BY THE BUFFER ZONES ESTABLISHED IN THE
FRENCH TERRITORY**

PRINCIPALITY OF MONACO

MONACO

II. List of municipalities affected partially or entirely by the infected zones established in the French territory for the presence of *Xylella fastidiosa* subsp. *multiplex*;

CORSICA

AFA
AJACCIO
ALATA
ALBITRECCIA
APPIETTO
ARRO
BASTELICACCIA
BELVEDERE-COMPOMORO
BIGUGLIA
BONIFACIO
CALCATOGGIO
CALVI
CARGESE
CASAGLIONE
CASALABRIVA
CAURO
COTI-CHIAVARI
COGGIA
CUTTOLI-CORTICCHIATO
ECCICA SUARELLA
FIGARI
FOZZANO
FURIANI
GHISONACCIA
GIUNCHETO
GROSSA
GROSSETO-PRUGNA
LECCI
LUMIO
MONACIA-D'AULLENE
OLMETO
OLMICCIA
OTA
PERI
PIANOTTOLI-CALDARELLO
PIETROSELLA
PILA-CANALE
PORTO-VECCHIO
PROPRIANO
SAINTE-LUCIE-DE-TALLANO
SANT'ANDREA D'ORCINO
SANTA-MARIA-FIGANELLA
SANTA REPARATA DI BALAGNA
SAN GAVINO DI CARBINI
SARROLA-CARCOPINO
SARTENE
SERRA-DI-FERRO
SOLLACARO
VERO

VICO
VIGGIANELLO
VILLANOVA
ZONZA

PROVENCE ALPES COTE D'AZUR (PACA)

ANTIBES
BIOT
LA SEYNE SUR MER
MANDELIEU-LA-NAPOULE
MENTON
NICE
SAINT-LAURENT-DU-VAR
VILLENEUVE LOUBET

III. List of municipalities affected partially or entirely by the demarcated area established in the Italian territory for the presence of *Xylella fastidiosa* subsp. *pauca*;

APULIA

AVETRANA
BRINDISI
CAROVIGNO
CAROSINO
CEGLIE MESSAPICA
CELLINO SAN MARCO
CISTERNINO
CRISPIANO
ERCHIE
ENTIRE PROVINCE OF LECCE
FAGGIANO
FASANO
FRAGAGNANO
FRANCAVILLA FONTANA
GROTTAGLIE
LATIANO
LEPORANO
LIZZANO
MANDURIA
MARTINA FRANCA
MARUGGIO
MESAGNE
MONTEIASI
MONTEMESOLA
MONTEPARANO
ORIA
OSTUNI
PULSANO
ROCCAFORZATA
SAN DONACI
SAN GIORGIO IONICO
SAN MARZANO DI SAN GIUSEPPE
SAN MICHELE SALENTINO
SAN PANCRAZIO SALENTINO
SAN PIETRO VERNOTICO
SAN VITO DEI NORMANNI
SAVA
STATTE
TARANTO
TORCHIAROLO
TORRE SANTA SUSANNA
TORRICELLA
VILLA CASTELLI

IV. List of municipalities affected partially or entirely by the infected zones established in the Italian territory for the presence of *Xylella fastidiosa* subsp. *pauca*;

APULIA

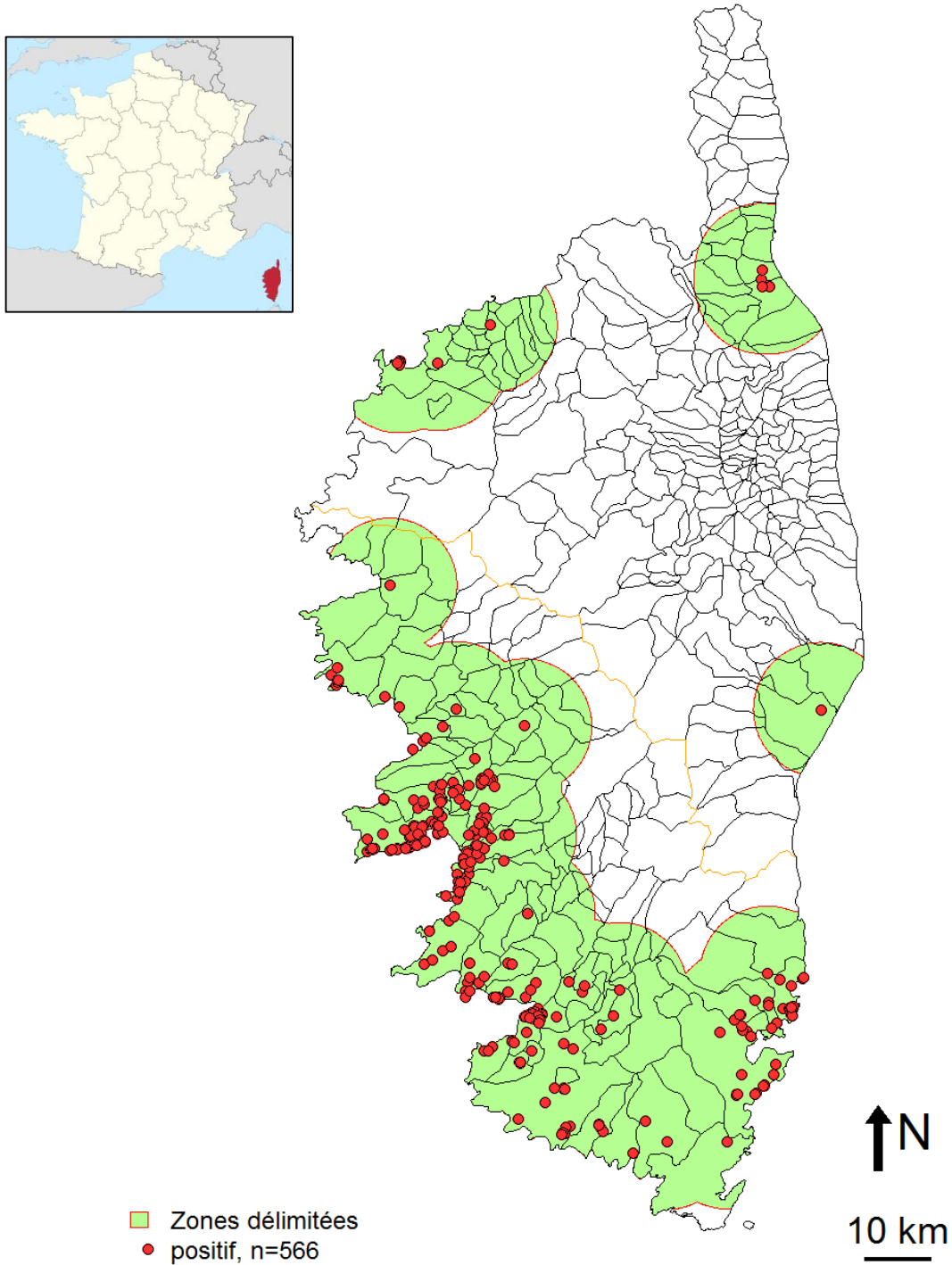
AVETRANA
BRINDISI
CAROSINO
CAROVIGNO
CEGLIE MESSAPICA
CELLINO SAN MARCO
ERCHIE
ENTIRE PROVINCE OF LECCE
FAGGIANO
FRAGAGNANO
FRANCAVILLA FONTANA
GROTTAGLIE
LATIANO
LEPORANO
LIZZANO
MANDURIA
MARTINA FRANCA
MARUGGIO
MESAGNE
MONTEIASI
MONTEPARANO
ORIA
OSTUNI
PULSANO
ROCCAFORZATA
SAN GIORGIO IONICO
SAN DONACI
SAN MARZANO DI SAN GIUSEPPE
SAN MICHELE SALENTINO
SAN PANCRAZIO SALENTINO
SAN PIETRO VERNOTICO
SAN VITO DEI NORMANNI
SAVA
TARANTO
TORRICELLA
TORCHIAROLO
TORRE SANTA SUSANNA
VILLA CASTELLI

1. Map of 'Demarcated Areas' located in Corsica (France)

(Latest update notified to European Commission dated 23/06/2016)

Zones tampons de 10 km autour des zones infectées par *Xylella fastidiosa*

Données entre le 21/07/2015 et le 16/06/2016

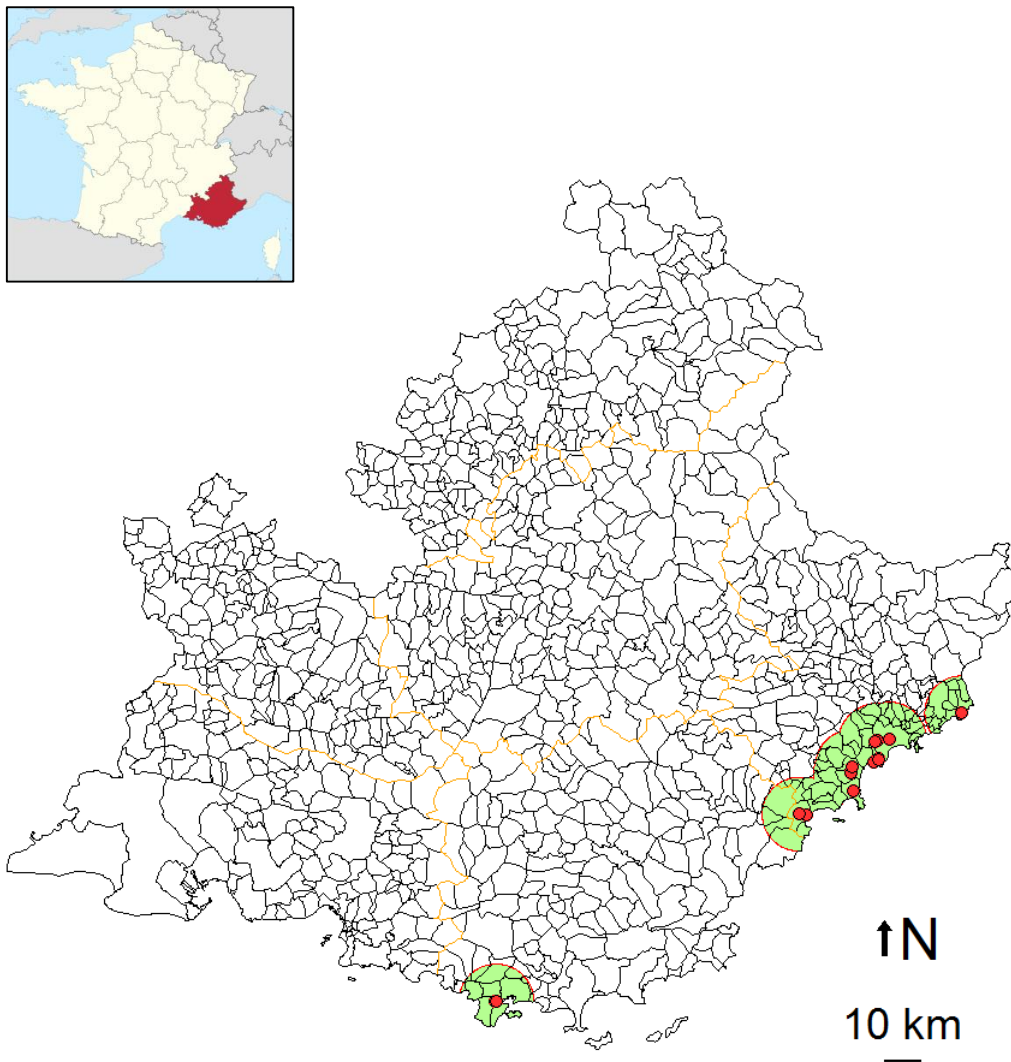


2. Map of 'Demarcated Areas' located in Provence-Alpes-Côte d'Azur (France)

(Latest update notified to European Commission dated 23/06/2016)

Zones tampons de 10 km autour des zones infectées par *Xylella fastidiosa*

Données entre le 21/07/2015 et le 16/06/2016



- Zones délimitées
- positif, n=42
- 1 interceptions de caféiers ne sont pas tracées.

3. Map of the 'Demarcated Area' located in Apulia (Italy) (Latest update notified to European Commission dated 1/06/2016)

