



EUROPEAN COMMISSION
DIRECTORATE-GENERAL FOR HEALTH AND FOOD SAFETY

Safety of the Food Chain
Plant health

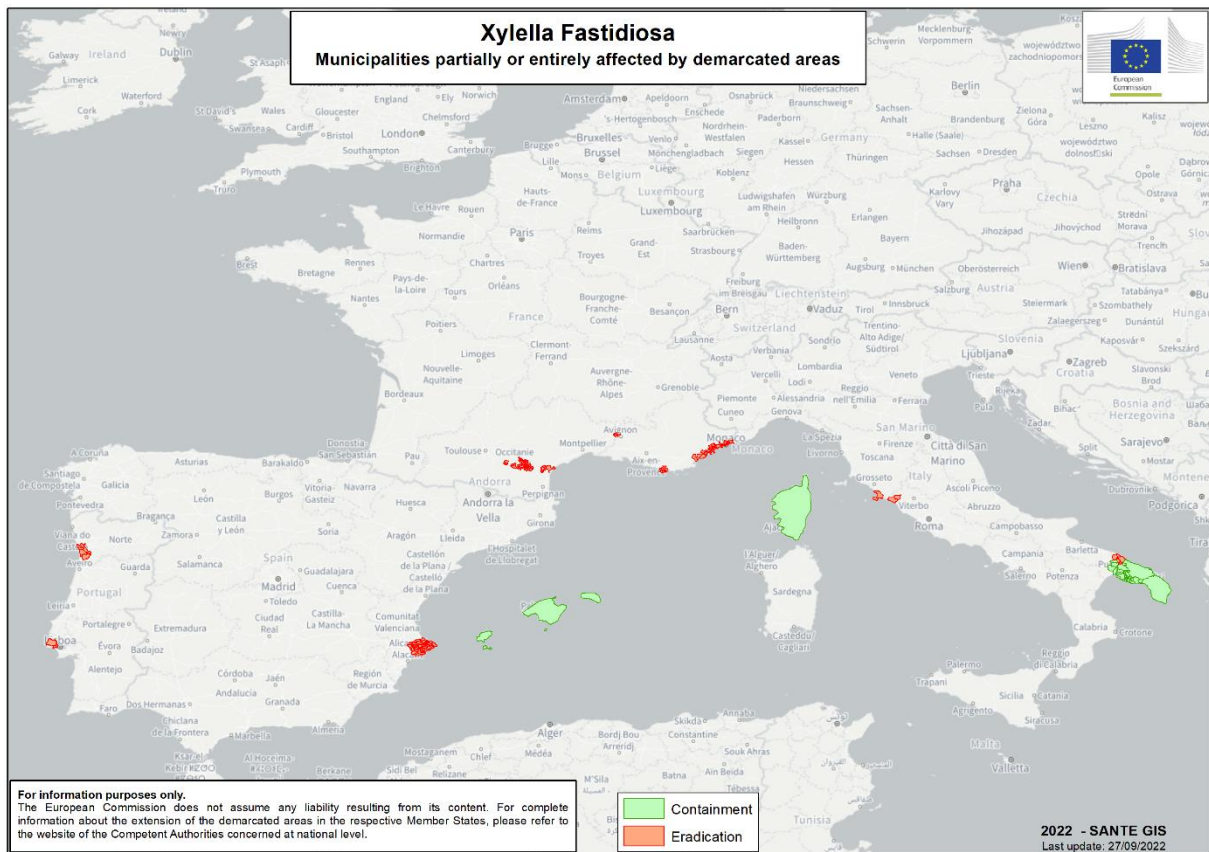
Brussels, 27 September 2022

**List of demarcated areas established in the Union territory for the
presence of *Xylella fastidiosa***

- UPDATE 18 -

Please note: the European Commission does not assume any liability resulting from its content. For complete information about the extension of the demarcated areas in the respective Member States, please refer to the website of the Competent Authorities concerned at national level.

Commission européenne/Europese Commissie, 1049 Bruxelles/Brussel, BELGIQUE/BELGIË - Tel. +32 22991111 - Office: F102 6/86 -
Tel. direct line +32 229-89942



ANNEX I

Municipalities located in France, whose territory partially or entirely falls within a demarcated area established for the presence of *X. fastidiosa* subsp. *multiplex* (eradication approach)

PART A

Municipalities whose territory partially or entirely falls within a demarcated area

REGION OF PROVENCE-ALPES-CÔTE D'AZUR (PACA)

ANTIBES

BEAULIEU SUR MER

BEAUSOLEIL

BIOT

CAGNES SUR MER

CANNES

CANTARON

CAP D'AIL

CASTELLAR

DRAP

EVENOS

EZE

FALICON

FREJUS

GORBIO

LA COLLE SUR LOUP

LA GAUDE
LA SEYNE SUR MER
LA TRINITE
LA TURBIE
LE CANNET
MANDELIEU LA NAPOULE
MENTON
MOUGINS
NICE
OLLIIOULES
OPIO
PEGOMAS
PEILLE
ROQUEBRUNE CAP MARTIN
ROQUEBRUNE SUR ARGENS
ROQUEFORT LES PINS
SAINT-ANDRE-DE-LA-ROCHE
SAINTE-AGNES
SAINT-JEAN CAP FERRAT
SAINT-JEANNET
SAINT-LAURENT DU VAR
SAINT-MANDRIER-SUR-MER
SAINT-PAUL DE VENCE
SAINT-RAPHAEL
SANARY-SUR-MER
SIX-FOURS
TANNERON
THEOULES SUR MER
TOULON
TOURETTES-LEVENS
TOURETTES SUR LOUP
VALBONNE
VALLAURIS
VENCE
VILLEFRANCHE SUR MER
VILLENEUVE LOUBET

PRINCIPALITY OF MONACO

MONACO

REGION OF OCCITANIE

ALAIRAC
ALZONNE
BADENS
BARBAIRA
BERRIAC
BIZANET
BLOMAC
BOUILHONNAC

BOUTENAC
BRAM
CAPENDU
CARCASSONNE
CASTELNAUDARY
CAUDEBRONDE
CAUX-ET-SAUZENS
CAVANAC
CAZILHAC
COMIGNE
CONQUES-SUR-ORBIEL
COUFFOULENS
CUXAC CABARDES
DOUZENS
FAJAC-EN-VAL
FENDEILLE
FLOURE
FONTIÈS D'AUDE
FOURNES-CABARDES
LASTOURS
LAURE-MINERVOIS
LAVALETTE
LA TOURETTE CABARDES
LES ILHES
LIMOISIS
LIRAC
MALVES-EN-MINERVOIS
MARCORIGNAN
MARSEILLETTE
MAS-DES-COURS
MIRAVAL CABARDES
MIREVAL LAURAGAIS
MONTIRAT
MONTREAL
MONTREDON-DES-CORBIERES
MONZE
NARBONNE
NEVIAN
ORNAISONS
PALAJA
PENNAUTIER
PUJAUT
ROCHEFORT-DU-GARD
ROULLENS
RUSTIQUES
SAINT-ANDRE-DE-ROCHELONGUE
SALLELES-CABARDES
SALSIGNE
TAVEL
TRASSANEL
TRÈBES
VAL-DE-DAGNE
VILLALIER
VILLANIERE
VILLARDONNEL

VILLEDUBERT
VILLEGY
VILLEMOUSTAUSSOU
VILLENEUVE-LA-COMPTAL
VILLENEUVE-MINERVOIS
VILLESISCLE

PART B

Municipalities whose territory partially or entirely falls within an infected zone

REGION OF PROVENCE ALPES COTE D'AZUR (PACA)

ANTIBES
BEAULIEU SUR MER
BIOT
CAGNES SUR MER
CAP D'AIL
FREJUS
LA GAUDE
LA SEYNE SUR MER
LA TRINITE
LE CANNET
MANDELIEU-LA-NAPOULE
MENTON
MOUGINS
NICE
OLLIOULES
ROQUEBRUNE CAP MARTIN
SAINT-LAURENT DU VAR
SAINT-MANDRIER-SUR-MER
SAINT-PAUL-DE-VENCE
SAINT-RAPHAEL
THEOULE SUR MER
TOULON
VALBONNE
VALLAURIS
VENCE
VILLEFRANCHE-SUR-MER
VILLENEUVE LOUBET

REGION OF OCCITANIE

BERRIAC
BIZANET
BOUILHONNAC
CAPENDU

CARCASSONNE
CASTELNAUDARY
COMIGNE
FLOURE
FONTIES D'AUDE
LAVALETTE
MONTIRAT
MONTREAL
MONZE
NEVIAN
SALSIGNE
TAVEL
TRÈBES
VILLANIERE
VILLARDONNEL
VILLENEUVE MINERVOIS

ANNEX II

Municipalities located in some parts of France, whose territory entirely falls within the demarcated area established *for the presence of X. fastidiosa subsp. multiplex* (containment approach)

PART A

Municipalities whose territory entirely falls within the demarcated area

REGION OF CORSICA
Entire territory

PART B

Municipalities whose territory entirely falls within the infected zone

REGION OF CORSICA
Entire territory

ANNEX III

Municipalities located in France, whose territory partially or entirely falls within the demarcated area established for the presence of *X. fastidiosa* subsp. *pauca* (eradication approach)

PART A

Municipalities whose territory partially or entirely falls within the demarcated area

REGION OF PROVENCE-ALPES-CÔTE D'AZUR (PACA)

MENTON

ROQUEBRUNE-CAP-MARTIN

PART B

Municipalities whose territory partially or entirely falls within the infected zone

REGION OF PROVENCE-ALPES-CÔTE D'AZUR (PACA)

MENTON

ANNEX IV

Municipalities located in Italy, whose territory partially or entirely falls within a demarcated area established for the presence of *X. fastidiosa* subsp. *pauca* (eradication approach)

PART A

Municipalities whose territory partially or entirely falls within a demarcated area

REGION OF APULIA

ALBEROBELLO
CASTELLANA GROTTA
CONVERSANO
MONOPOLI
POLIGNANO A MARE

REGION OF LIGURIA

VENTIMIGLIA

PART B

Municipalities whose territory partially or entirely falls within the infected zone

REGION OF APULIA

ALBEROBELLO
CASTELLANA GROTTA
MONOPOLI
POLIGNANO A MARE

ANNEX V

Municipalities located in Italy, whose territory partially or entirely falls within a demarcated area established for the presence of *X. fastidiosa* subsp. *multiplex* (eradication approach)

PART A

Municipalities whose territory partially or entirely falls within a demarcated area

REGION OF TUSCANY
MONTE ARGENTARIO
ORBETELLO
REGION OF LAZIO
CANINO
MONTALTO DI CASTRO

PART B

Municipalities whose territory partially or entirely falls within the infected zone

REGION OF TUSCANY
MONTE ARGENTARIO
ORBETELLO
REGION OF LAZIO
CANINO

ANNEX VI

Municipalities located in Italy, whose territory partially or entirely falls within the demarcated area established for the presence of *X. fastidiosa* subsp. *pauca* (*containment approach*)

PART A

Municipalities whose territory partially or entirely falls within the demarcated area

REGION OF APULIA

ENTIRE PROVINCE OF BRINDISI (ALL MUNICIPALITIES)

ENTIRE PROVINCE OF LECCE (ALL MUNICIPALITIES)

ALBEROBELLO

AVETRANA

CAROSINO

CASTELLANA GROTTE

CRISPIANO

FAGGIANO

FRAGAGNANO

GROTTAGLIE

LEPORANO

LIZZANO

LOCOROTONDO

MANDURIA

MARTINA FRANCA

MARUGGIO

MASSAFRA

MONOPOLI

MONTEIASI

MONTEMESOLA

MONTEPARANO

MOTTOLA

NOCI

PULSANO

PUTIGNANO

ROCCAFORZATA

SAN GIORGIO IONICO

SAN MARZANO DI SAN GIUSEPPE

SAVA

STATTE

TARANTO

TORRICELLA

PART B

Municipalities whose territory entirely falls within the infected zone

REGION OF APULIA

ENTIRE PROVINCE OF BRINDISI (ALL MUNICIPALITIES)

ENTIRE PROVINCE OF LECCE (ALL MUNICIPALITIES)

AVETRANA

CAROSINO

CRISPIANO
FAGGIANO
FRAGAGNANO
GROTTAGLIE
LEPORANO
LIZZANO
LOCOROTONDO
MANDURIA
MARTINA FRANCA
MARUGGIO
MONTEIASI
MONTEMESOLA
MONTEPARANO
PULSANO
ROCCAFORZATA
SAN GIORGIO IONICO
SAN MARZANO DI SAN GIUSEPPE
SAVA
STATTE
TARANTO
TORRICELLA

ANNEX VII

Municipalities located in Portugal, whose territory partially or entirely falls within a demarcated area established for the presence of *X. fastidiosa* subsp. *multiplex* (eradication approach)

PART A

Municipalities whose territory partially or entirely falls within a demarcated area

REGION OF METROPOLITAN AREA OF PORTO
ESPINHO
GONDOMAR
MAIA
MATOSINHOS
PORTO
SANTA MARIA DA FEIRA
VILA NOVA DE GAIA

PART B

Municipalities whose territory partially or entirely falls within the infected zone

REGION OF METROPOLITAN AREA OF PORTO
GONDOMAR
MATOSINHOS
PORTO
SANTA MARIA DA FEIRA
VILA NOVA DE GAIA

Municipalities located in Portugal, whose territory partially or entirely falls within a demarcated area established for the presence of *X. fastidiosa* (eradication approach)

PART A

Municipalities whose territory partially or entirely falls within a demarcated area

REGION OF METROPOLITAN AREA OF LISBON
AMADORA
OEIRAS
SINTRA

PART B

Municipalities whose territory partially or entirely falls within the infected zone

REGION OF METROPOLITAN AREA OF LISBON
SINTRA

ANNEX VIII

Municipalities located in Spain, whose territory partially or entirely falls within a demarcated area established for the presence of *X. fastidiosa* subsp. *multiplex* (eradication approach)

PART A

Municipalities whose territory partially or entirely falls within a demarcated area

AUTONOMOUS COMMUNITY OF VALENCIA

ALCALI
ALCOCER DE PLANES
ALCOLEJA
ALMUDAINA
ALTEA
BALONES
BENASAU
BENIARBEIG
BENIARDÁ
BENIARRÉS
BENIDOLEIG
BENIDORM
BENIFALLIM
BENIFATO
BENIGEMBLA
BENILLOBA
BENILLUP
BENIMANTELL
BENIMARFULL
BENIMASSOT
BENIMELI
BENISSA
BOLULLA
CALLOSA D'EN SARRIÀ
CALP
CASTELL DE CASTELLS
COCENTAINA
CONFRIDES
DÉNIA
EL CASTELL DE GUADALEST
EL POBLE NOU DE BENITATXELL
EL RÀFOL D'ALMÚNIA
EL VERGER
ELS POBLETS
FACHECA
FAMORCA
FINESTRAT
GATA DE GORGOS
GORGA
LA NUCIA
LA VALL D'ALCALÀ
LA VALL DE LAGUAR
LA VALL D'EBO

L'ALFÀS DEL PI
L'ALQUERIA D'ASNAR
L'ATZÚBIA
L'ORXA
LLÍBER
MILLENA
MURLA
MURO DE ALCOY
OLIVA
ONDARA
ORBA
ORXETA
PARCENT
PEDREGUER
PEGO
PENÀGUILA
PLANES
POLOP
QUATRETONDETA
RELLEU
SAGRA
SANET Y NEGRALS
SELLA
SENIJA
TÀRBENA
TEULADA
TOLLOS
TORMOS
VALL DE GALLINERA
VILLALONGA
VILLAJYOSA
XÀBIA
XALÓ

PART B

Municipalities whose territory partially or entirely falls within an infected zone

AUTONOMOUS COMMUNITY OF VALENCIA
ALCALI
ALCOLEJA
ALMUDAINA
ALTEA
BALONES
BENASAU
BENIARBEIG
BENIARDÁ
BENIDOLEIG
BENIDORM
BENIFATO
BENIGEMBLA
BENILLOBA
BENILLUP
BENIMANTELL

BENIMASSOT
BENIMELI
BENISSA
BOLULLA
CALLOSA D'EN SARRIÀ
CALP
CASTELL DE CASTELLS
CONFRIDES
DÉNIA
EL CASTELL DE GUADALEST
EL POBLE NOU DE BENITATXELL
EL RÀFOL D'ALMÚNIA
EL VERGER
FACHECA
FAMORCA
FINESTRAT
GATA DE GORGOS
GORGA
L'ALFÀS DEL PI
L'ATZÚBIA
LA NUCIA
LA VALL D'ALCALÀ
LA VALL DE LAGUAR
LA VALL D'ELBO
LLÍBER
L'ORXA
MILLENA
MURLA
ONDARA
ORBA
PARCENT
PEDREGUER
PEGO
PENÀGUILA
PLANES
POLOP
QUATRETONDETA
SAGRA
SANET Y NEGRALS
SELLA
SENIJA
TÀRBENA
TEULADA
TOLLOS
TORMOS
VALL DE GALLINERA
VILLALONGA
XÀBIA
XALÓ

ANNEX IX

Municipalities located in Spain, whose territory entirely falls within the demarcated area established for the presence of *X. fastidiosa*

(containment approach)

PART A

Municipalities whose territory entirely falls within the demarcated area

AUTONOMOUS COMMUNITY OF BALEARIC ISLANDS

Entire territory

PART B

Municipalities whose territory entirely falls within the infected zone

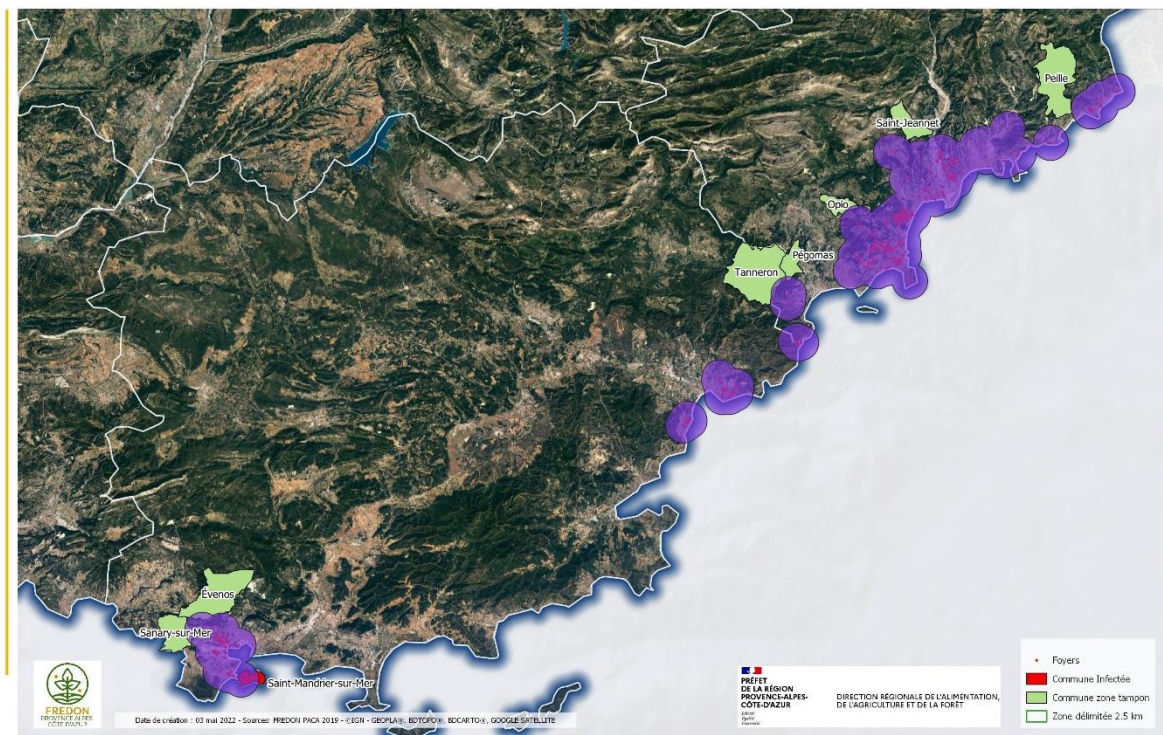
AUTONOMOUS COMMUNITY OF BALEARIC ISLANDS

Entire territory

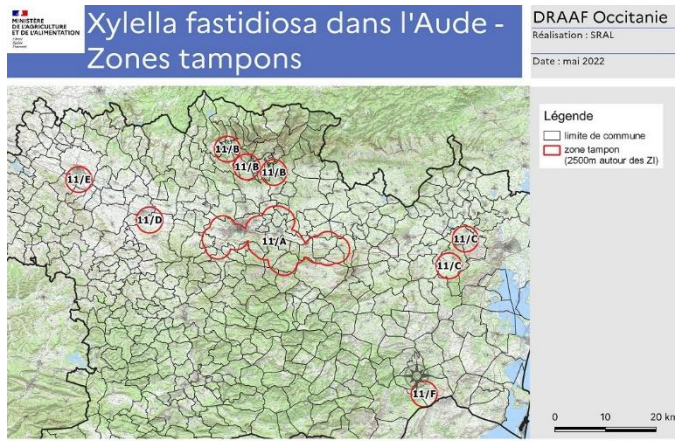
MAP OF THE DEMARCATED AREA ESTABLISHED IN THE WHOLE REGION OF CORSICA (FRANCE) - CONTAINMENT APPROACH



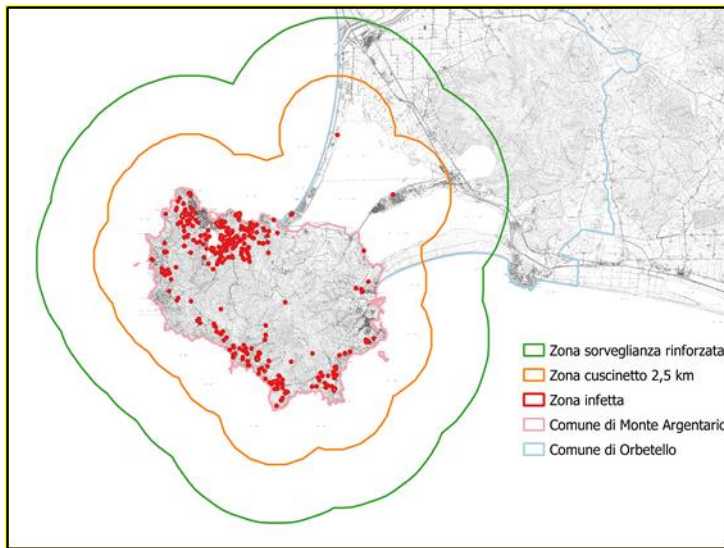
MAP OF THE DEMARCATED AREAS ESTABLISHED IN THE REGION OF PROVENCE-ALPES-CÔTE D'AZUR (FRANCE) - ERADICATION APPROACH



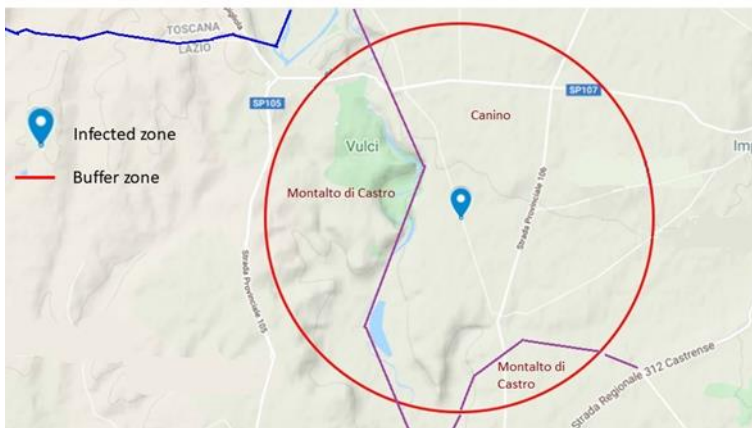
MAP OF THE DEMARCATED AREAS ESTABLISHED IN THE REGION OF OCCITANIE (FRANCE) – ERADICATION APPROACH



MAP OF THE DEMARCATED AREA ESTABLISHED IN THE REGION OF TUSCANY (ITALY) – ERADICATION APPROACH



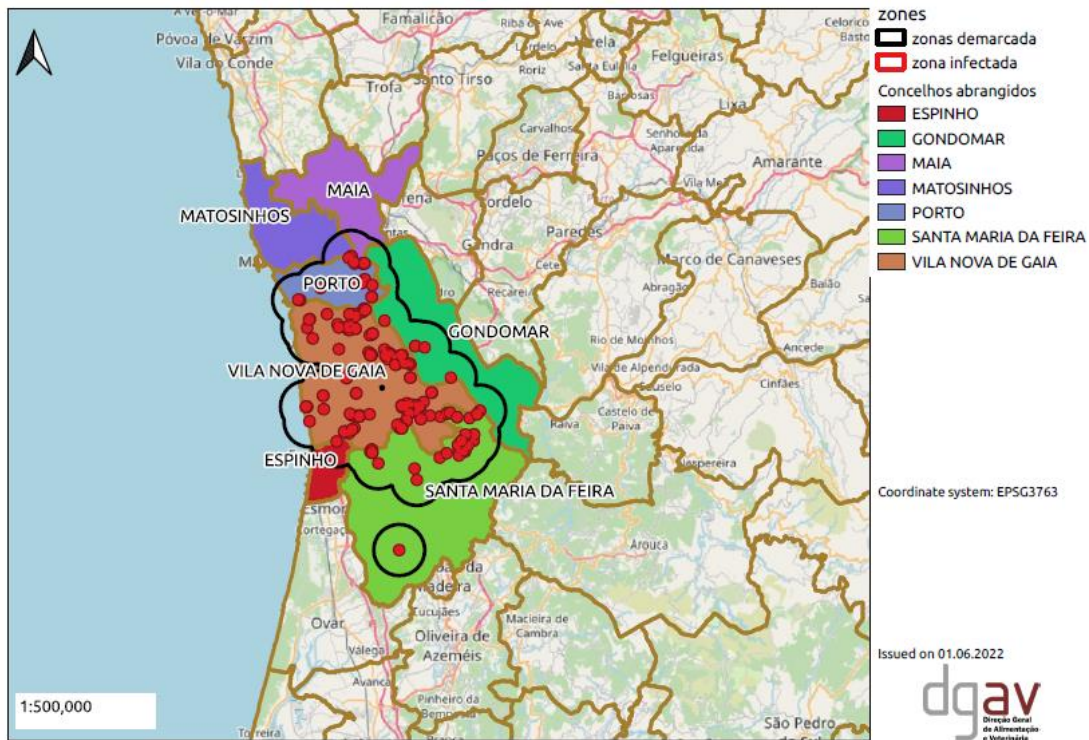
MAP OF THE DEMARCATED AREA ESTABLISHED IN THE REGION OF LAZIO (ITALY) – ERADICATION APPROACH



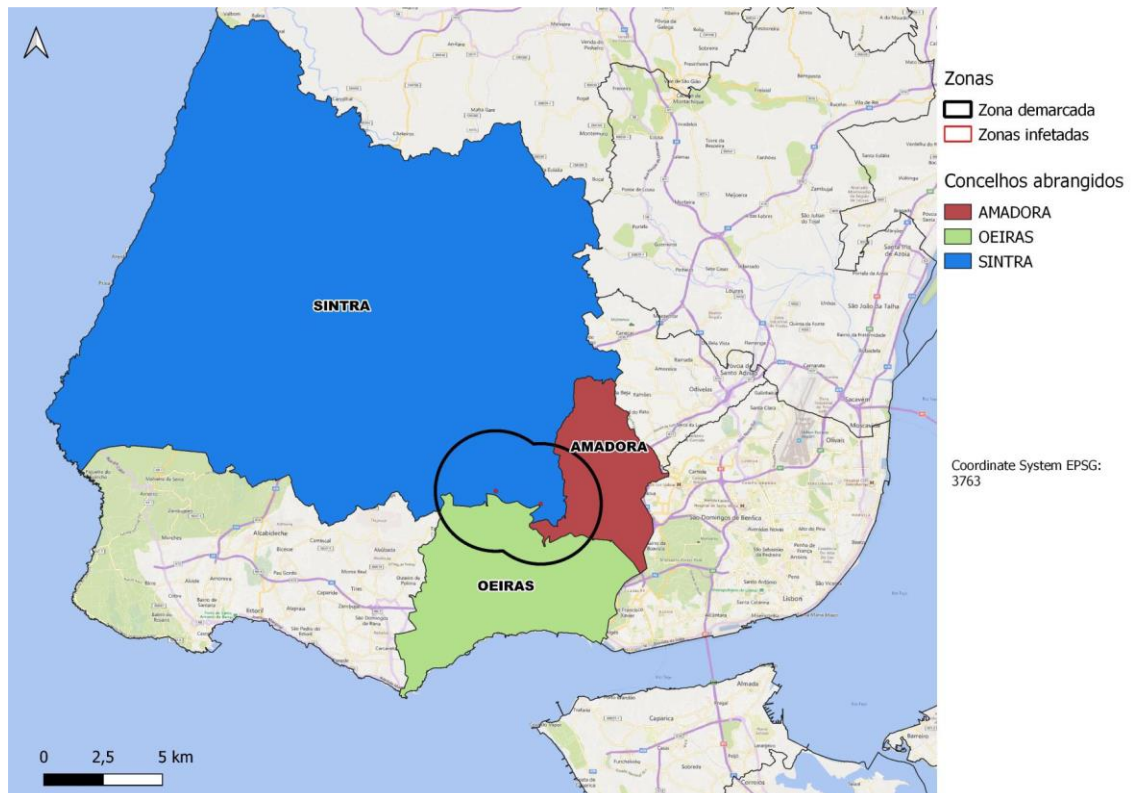
MAP OF THE DEMARCATED AREAS ESTABLISHED IN THE REGION OF APULIA (ITALY)

1. DEMARCATED AREA UNDER ERADICATION
2. DEMARCATED AREA UNDER CONTENIMENT

MAP OF THE DEMARCATED AREA ESTABLISHED IN THE METROPOLITAN AREA OF PORTO (PORTUGAL) – ERADICATION APPROACH



MAP OF THE DEMARCATED AREA ESTABLISHED IN THE METROPOLITAN AREA OF LISBON (PORTUGAL) – ERADICATION APPROACH



MAP OF THE DEMARCATED AREA ESTABLISHED IN THE WHOLE TERRITORY OF THE AUTONOMOUS COMMUNITY OF BALEARIC ISLANDS (SPAIN) – *CONTAINMENT APPROACH*

ALL THE TERRITORY OF BALEARIC ISLANDS

MAP OF THE DEMARCATED AREA ESTABLISHED IN THE AUTONOMOUS COMMUNITY OF VALENCIA (SPAIN) – *ERADICATION APPROACH*

